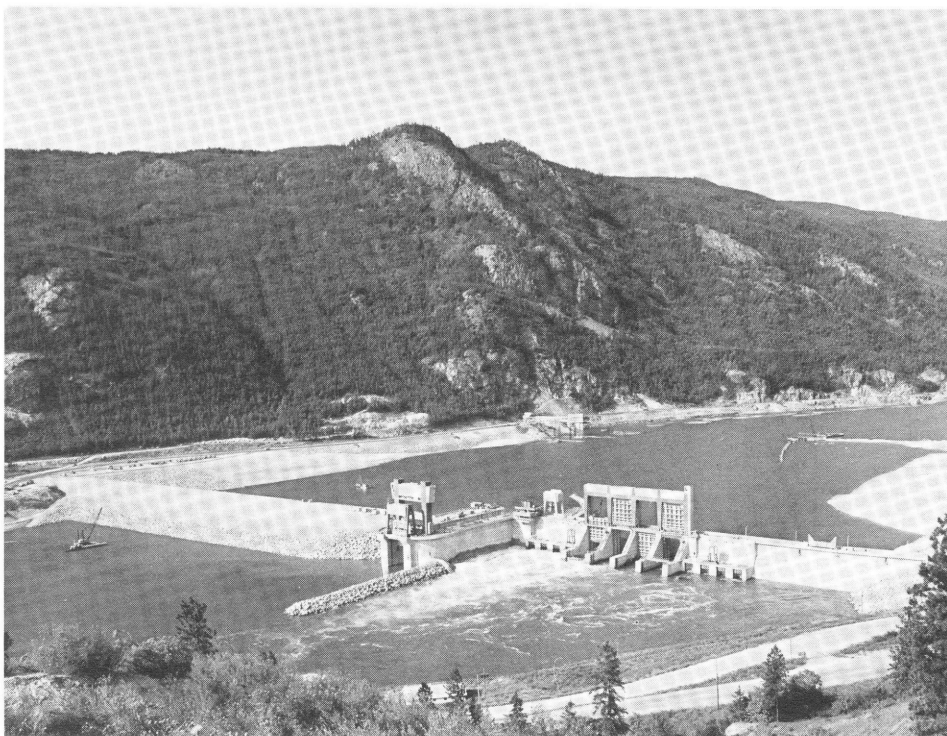


THE AMERICAN CANAL GUIDE

A Practical Guide to the Historic Canals of the United States and Canada
Published by the American Canal Society

BRITISH COLUMBIA



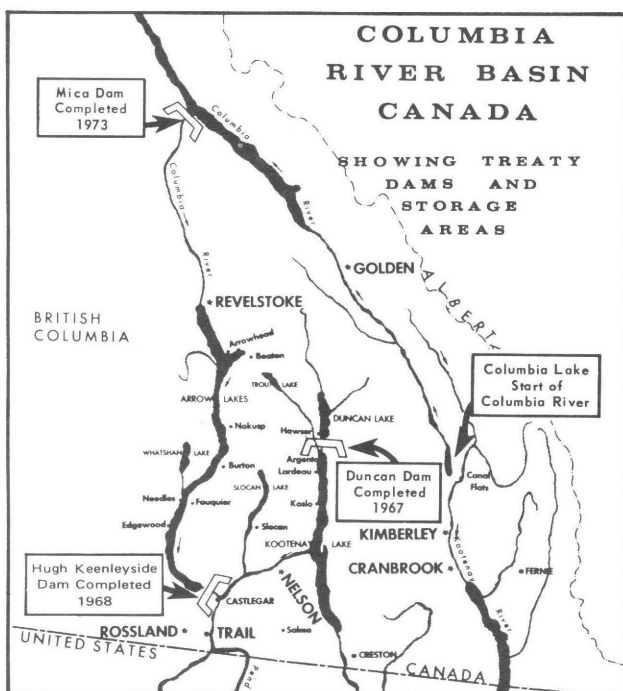
Hugh Keenleyside Dam, six miles upstream on the Columbia River from Castlegar, now controls the river's flow through discharge works in the concrete section of the dam on right. A navigation lock (centre) passes river traffic through the 170-foot-high structure. A portion of the dam on the left is earthfill.

The following item may be considered as an addition to the AMERICAN CANAL GUIDE, Part I, published (and distributed to ACS members) in September of 1974.

KEENLEYSIDE LOCK AND DAM

The *Keenleyside Lock and Dam* (at first called the *Arrow Dam*) is on the *Columbia River in British Columbia*, 5 mi. above the junction with the *Kootenay* at *Castlegar*. Designed for flood control and hydro power as well as navigation, it has a lock (50' x 290', max. lift 75', 1968) which is used by pleasure craft as well as commercial traffic and logs. Both gates of the lock are *Guillotine (lift) gates*, the lower one 80' high. The upper gate is only some 15' high, with an upper sill which can be varied in height, according to the level of the reservoir, by adding or removing bulkheads – essentially huge stop planks. There is a public road across the dam, which curves around the lower end of the lock about halfway across, and there are picnic areas at each end of the dam. For brochures, "How to use the lock at Keenleyside Dam" and "Columbia Treaty Projects" write the *British Columbia Hydro and Power Authority*, 970 Burrard Street, Vancouver B.C. V6Z 1Y3, Canada.

(Drive carefully across the dam – someone forgot to turn and had to be pulled out of the lock.)



Pleasure craft leaving the Lock at Hugh Keenleyside Dam. Note the "guillotine type" outlet gate.