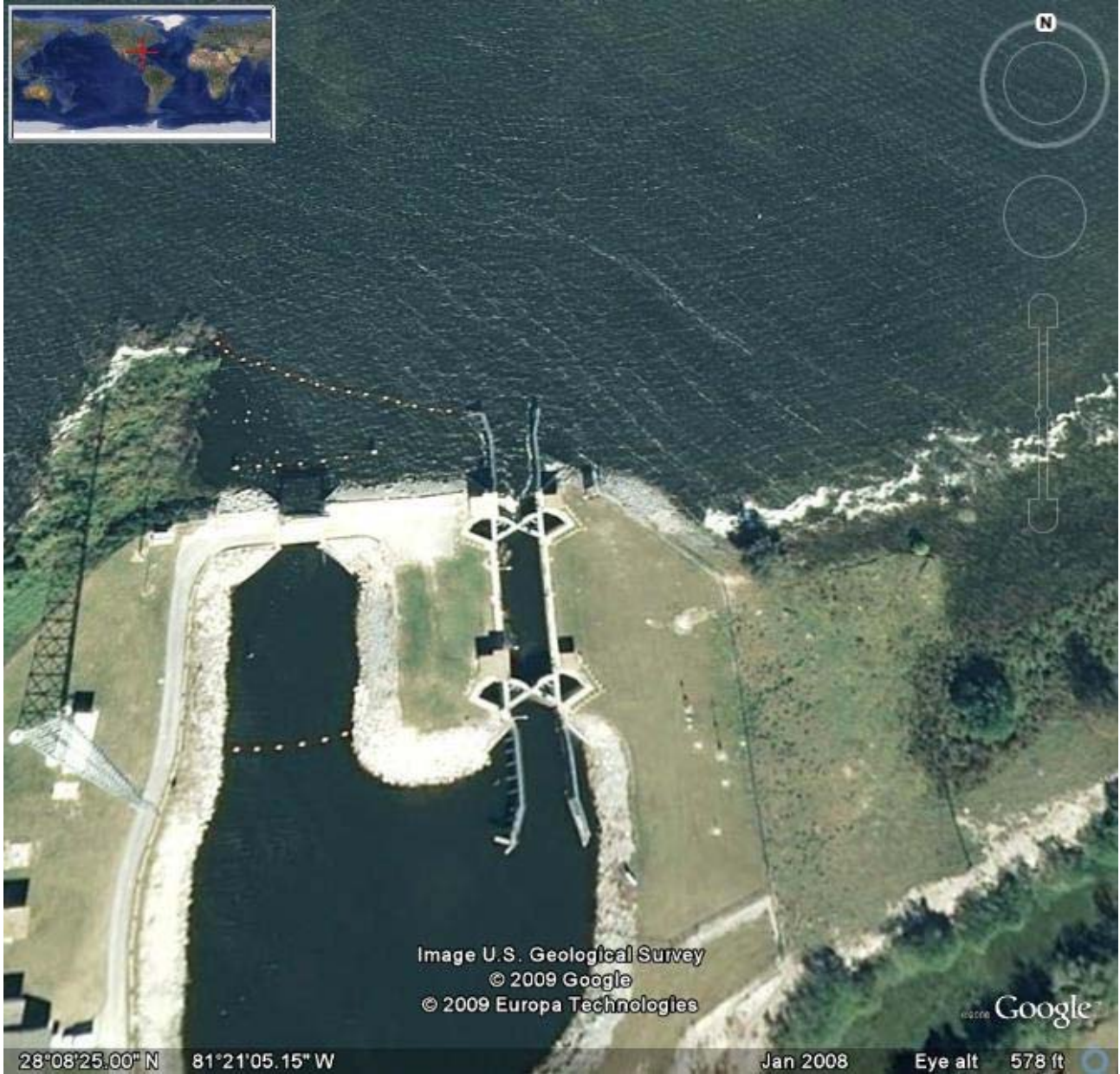


American Canal Society Canal Index

CANAL	STATUS			ACS		
				HAER		
STATE/PROVINCE	ENLARGEMENTS	DATES IN USE	CANAL	LENGTH SLACKWATER	TOTAL	LIFT LOCKS No./SIZE
COUNTIES:		1				
LOCATION (Endpoints of Canal):		2				
TOPOGRAPHIC MAPS:		3				
		4				
HISTORICAL SIGNIFICANCE:						
PHYSICAL DESCRIPTION:						
NAMES & ADDRESSES OF GROUPS CONCERNED WITH CANAL'S PRESERVATION/RESTORATION:						
BIBLIOGRAPHICAL SUMMARY:						
UNPUBLISHED RECORDS, PHOTOS, DRAWINGS (CEHR, HAER, HABS. Local or Regional Historical Societies, Libraries, etc.):						
EXISTING OR RECOMMENDED LANDMARK STATUS (CEHR, National Register, ETC.):						
Investigation made by:					Date:	
Address:						

Use additional pages for added information



**Structure 61 at the north end of the C-35 Canal
South Port, FL**