

Blackstone Canal Conservancy

Blackstone Canal

Blackstone Valley



Blackstone Canal

- Providence, RI to Worcester, MA
- 45+ miles long
- 49 Locks, 1 wooden, 48 stone
- 1 Aqueduct (Mumford River, Uxbridge)
- 451.5 foot drop (9.2 feet / lock)
- Prism: 32' wide at waterline, 18' at bottom, 3.5' deep
- Locks: 70' between gates, 10' wide

Blackstone Canal

- First proposed in 1798
 - (Middlesex Canal, built 1793 – 1803)
- Incorporated in 1823
- Construction began
 - Providence: 1824
 - Worcester: 1826
- Opened 1828
- Closed 1848

Blackstone Canal facts

- Built 1824 – 1828
- Erie Canal built 1817 – 1825
 - (Stourbridge Lion ran Aug. 8, 1829)
- Blackstone Canal locks: 10' x 70'
- Erie Canal “ditch” locks: 15' x 90'
- Blackstone Canal Engineers
 - Benjamin Wright
 - Holmes Hutchinson
 - “As builds” (1828) by Edwin Phelps

WHY USE WATER?

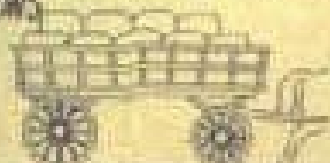
Each load is the amount which could be pulled by a single horse.

1ST TON



ROADWAY

2 TONS



CART ON A ROAD

8 TONS



TEAMWAY

30 TONS



BLIND IN A TRAIL

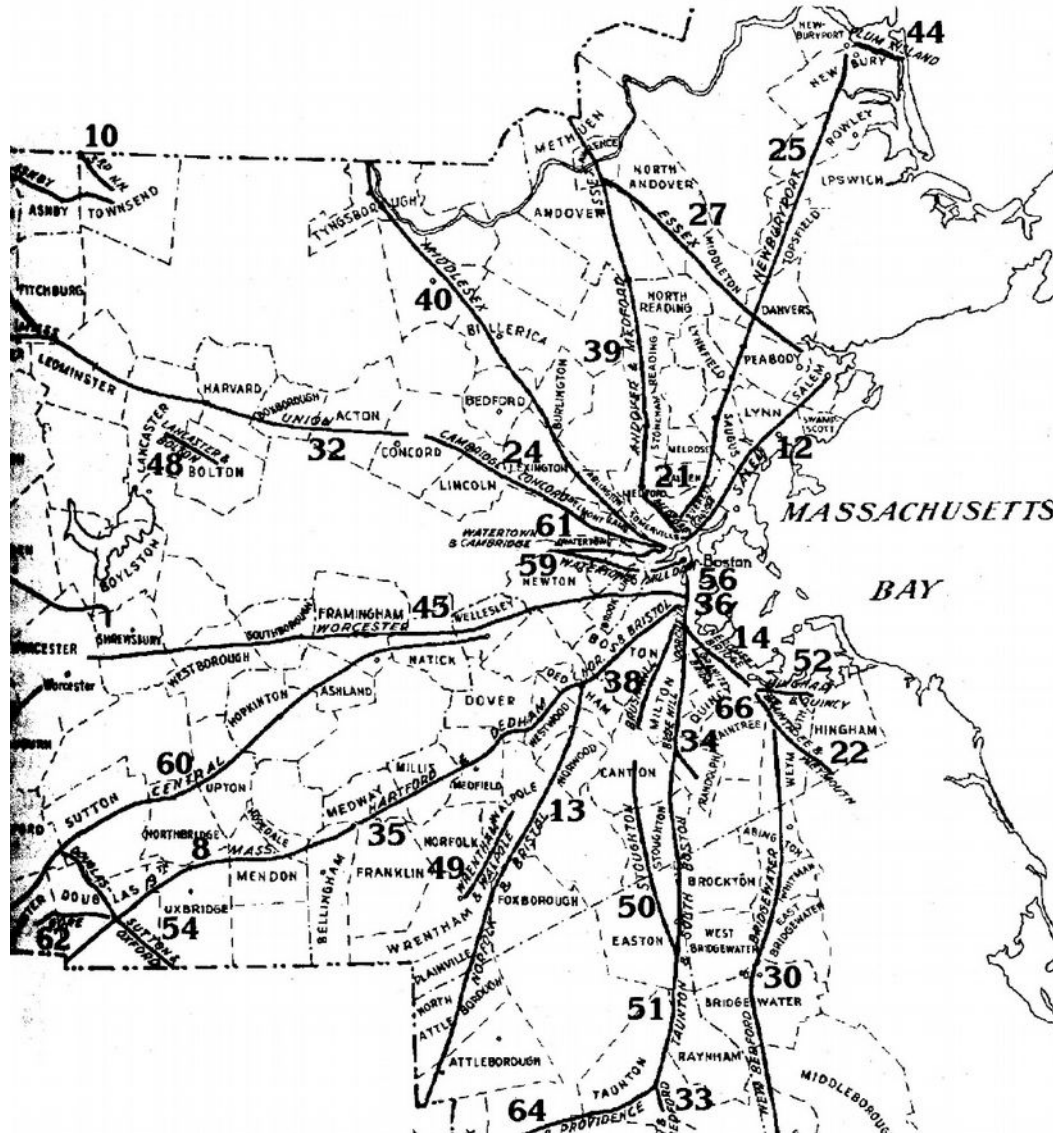
50 TONS



BLIND IN A TRAIL



Area Turnpikes



Moshassuck River entering Providence



Moshassuck River @ Lock 1, Providence



Lock 5, Mineral Springs Ave.



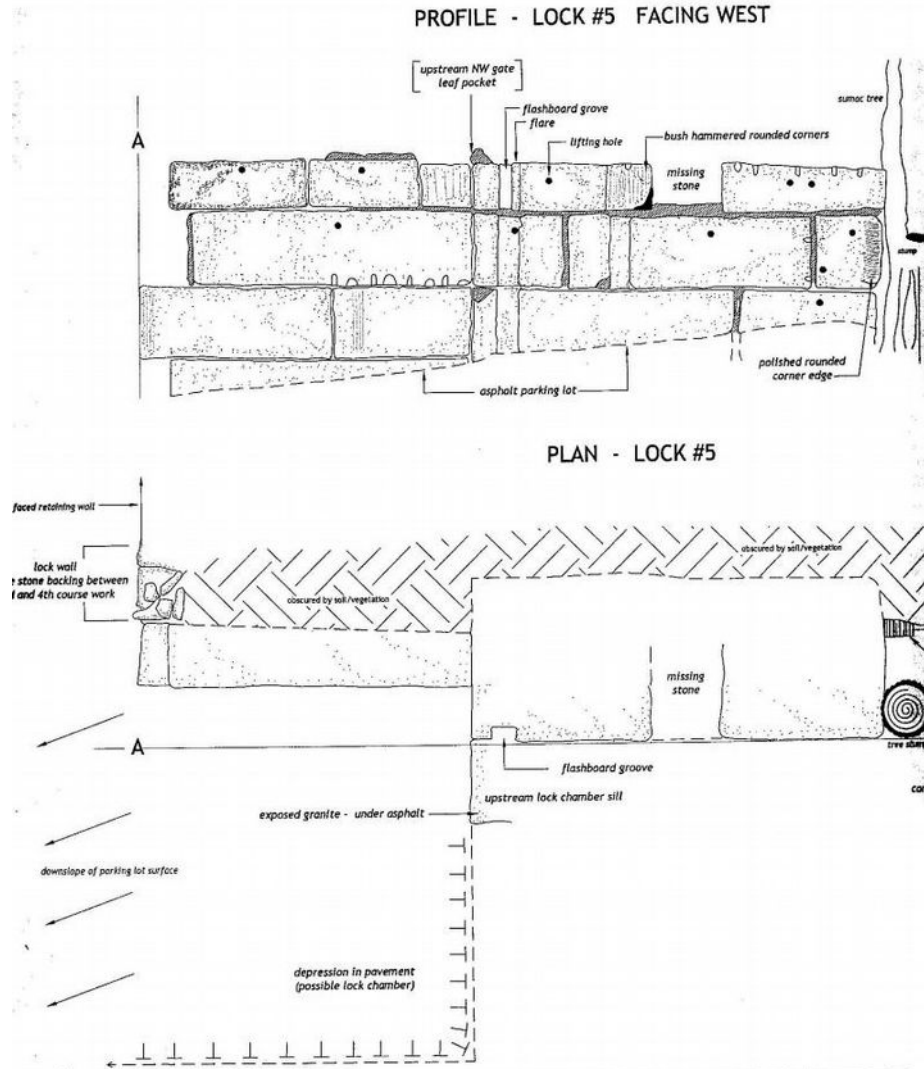
Lock 5, Mineral Springs Ave



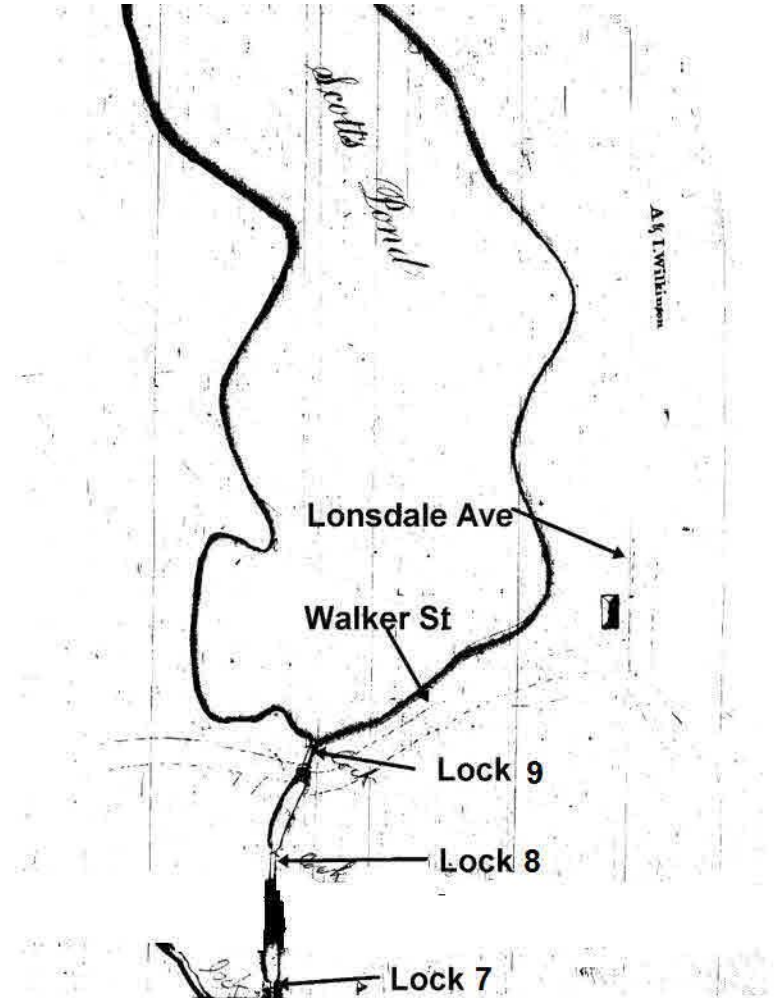
Railroad ties of old spur just to west of lock

Upper end of lock wall

Lock 5, Mineral Springs Ave



Scotts Pond – south end



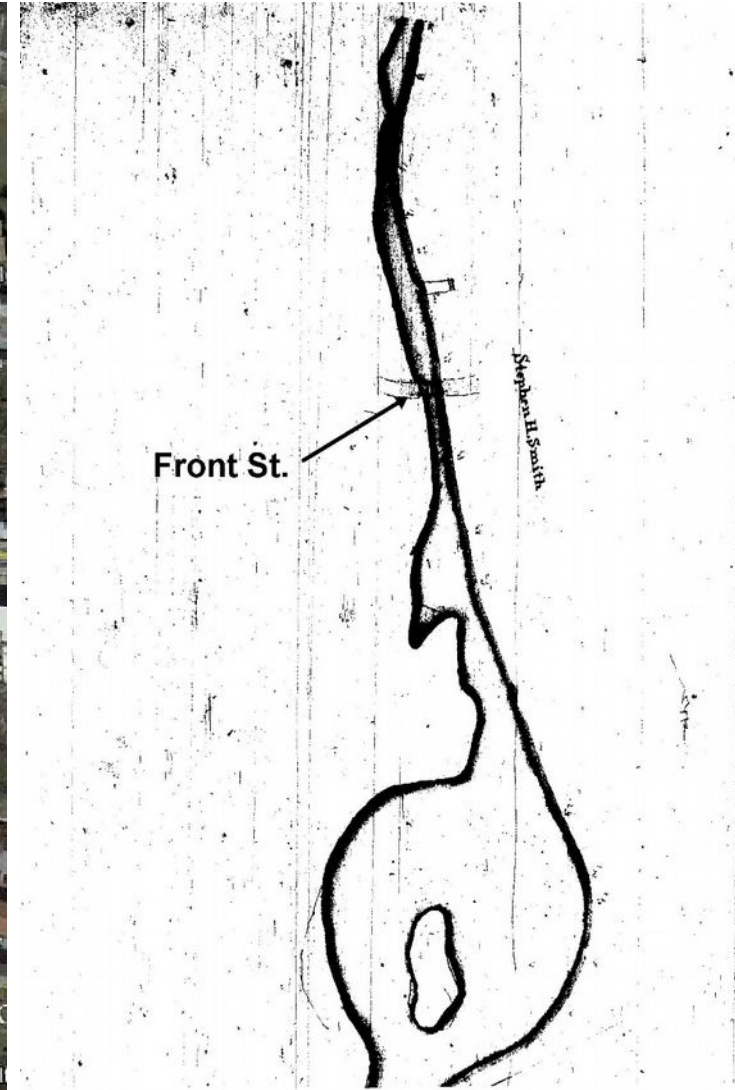
Scotts Pond – west side



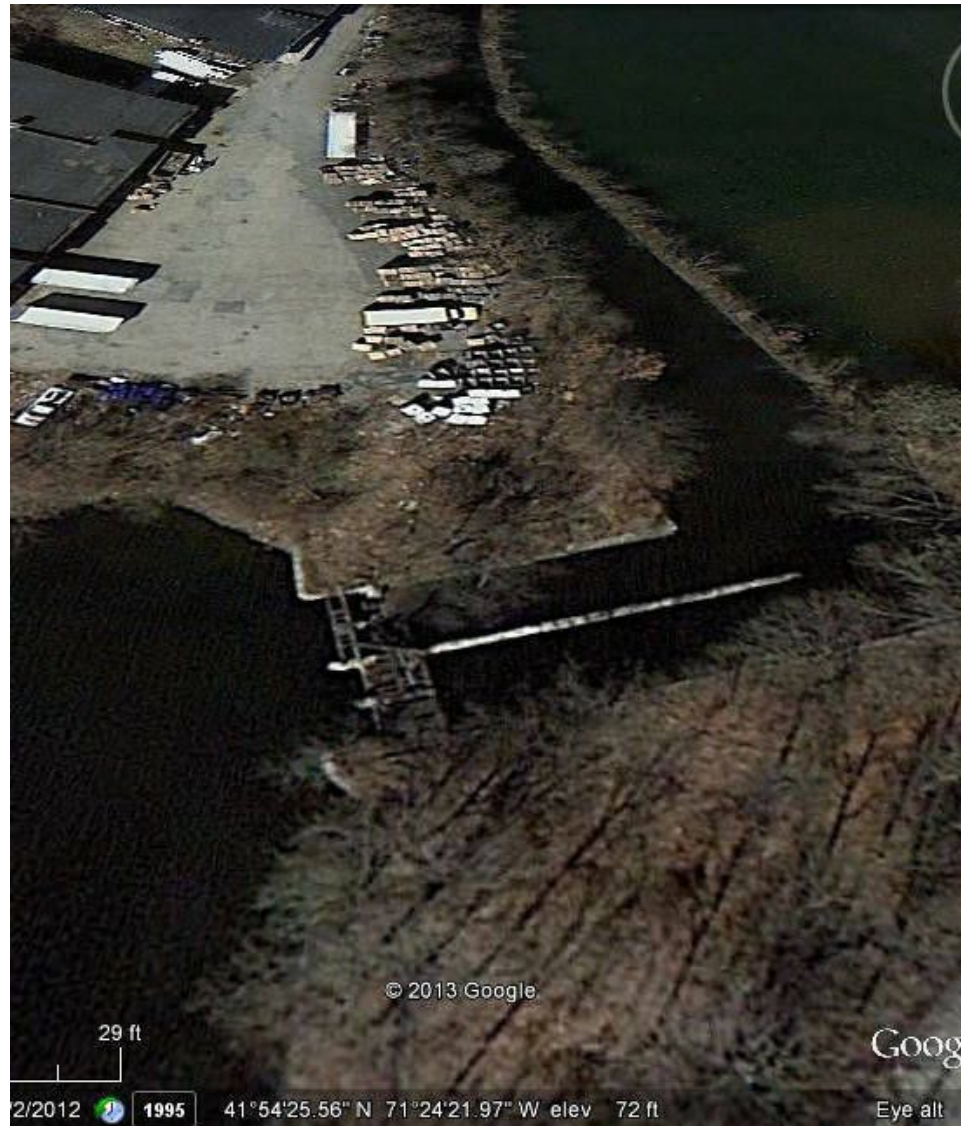
Scotts Pond - east shore



Lonsdale @ Front St., Lincoln, RI



Lonsdale @ Front St.



Milestones

- 45 total (assuming no “0” milestone)
- Each is 8” square, 5’ tall, rounded top with about half buried in the ground
- Known milestones
 - #8 Blackstone River State Park, Lincoln, RI
 - #18 Blackstone, MA
 - #20 Millville, MA (lying face down)
 - #24 Worcester Historical Museum collection
 - #25 Uxbridge, MA
 - #28 Northbridge, MA (mostly buried)
 - #37 Millbury, MA

Milestones



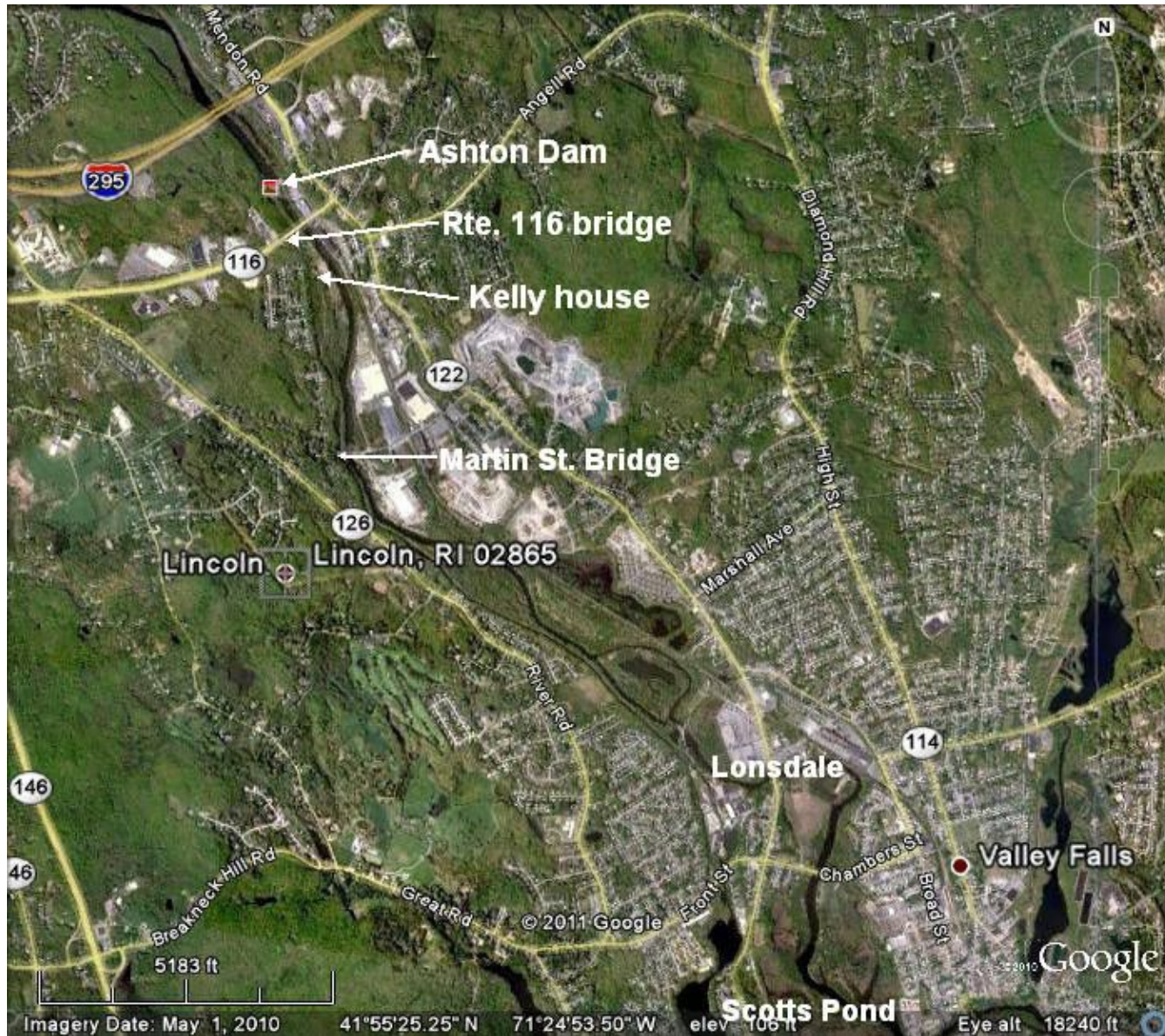
From the collections of Worcester Historical Museum, Worcester, MA



Milestones



Lincoln, RI



Canal at Pratt Dam



Pratt Dam



Old dam @ Pratt Dam



Old Martin Street canal bridge



New Martin Street canal bridge



Canoe Rock & Milepost 8



Kelly House, Lincoln, RI



Canal north at Ashton Viaduct



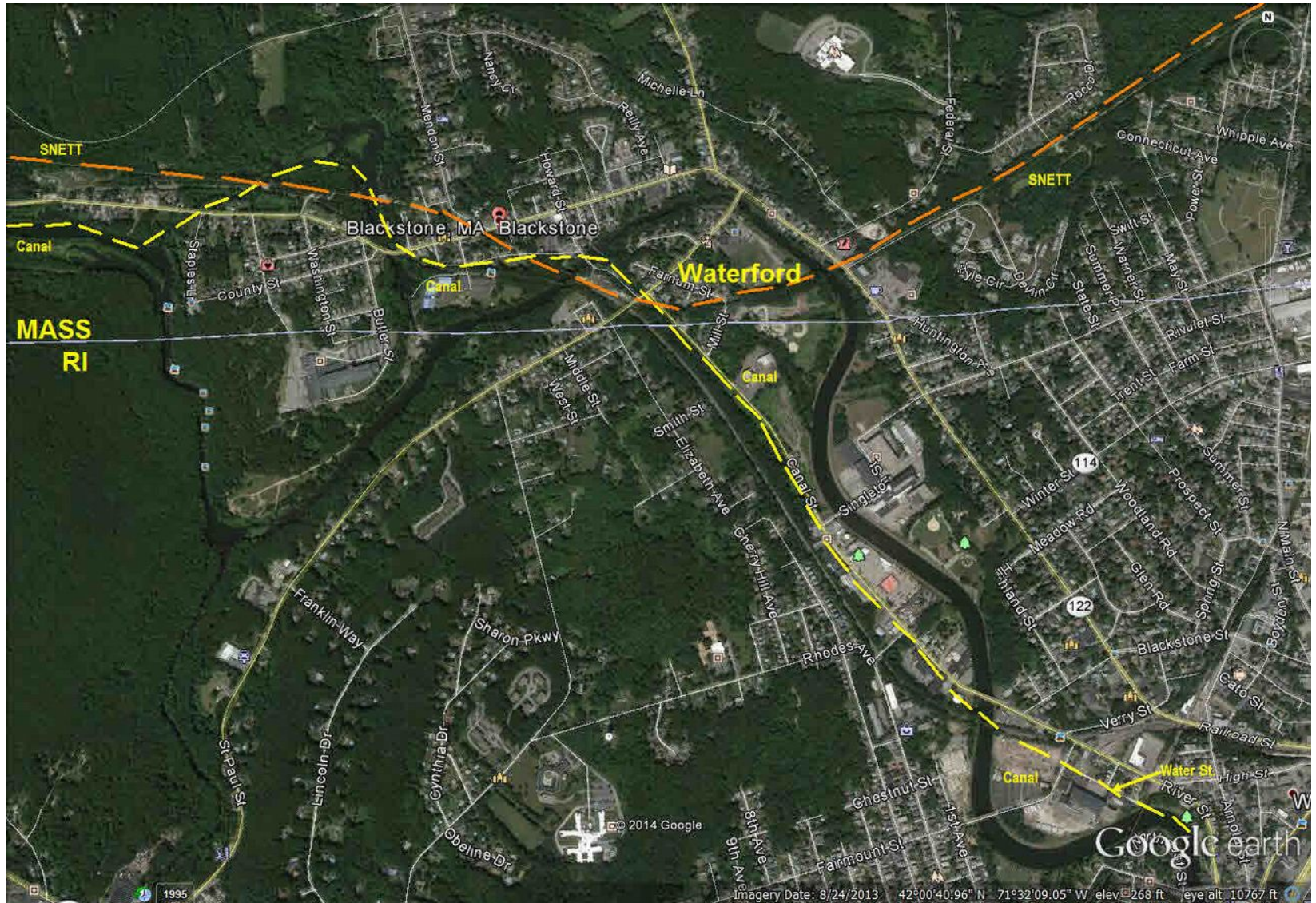
Upriver to Ashton Dam



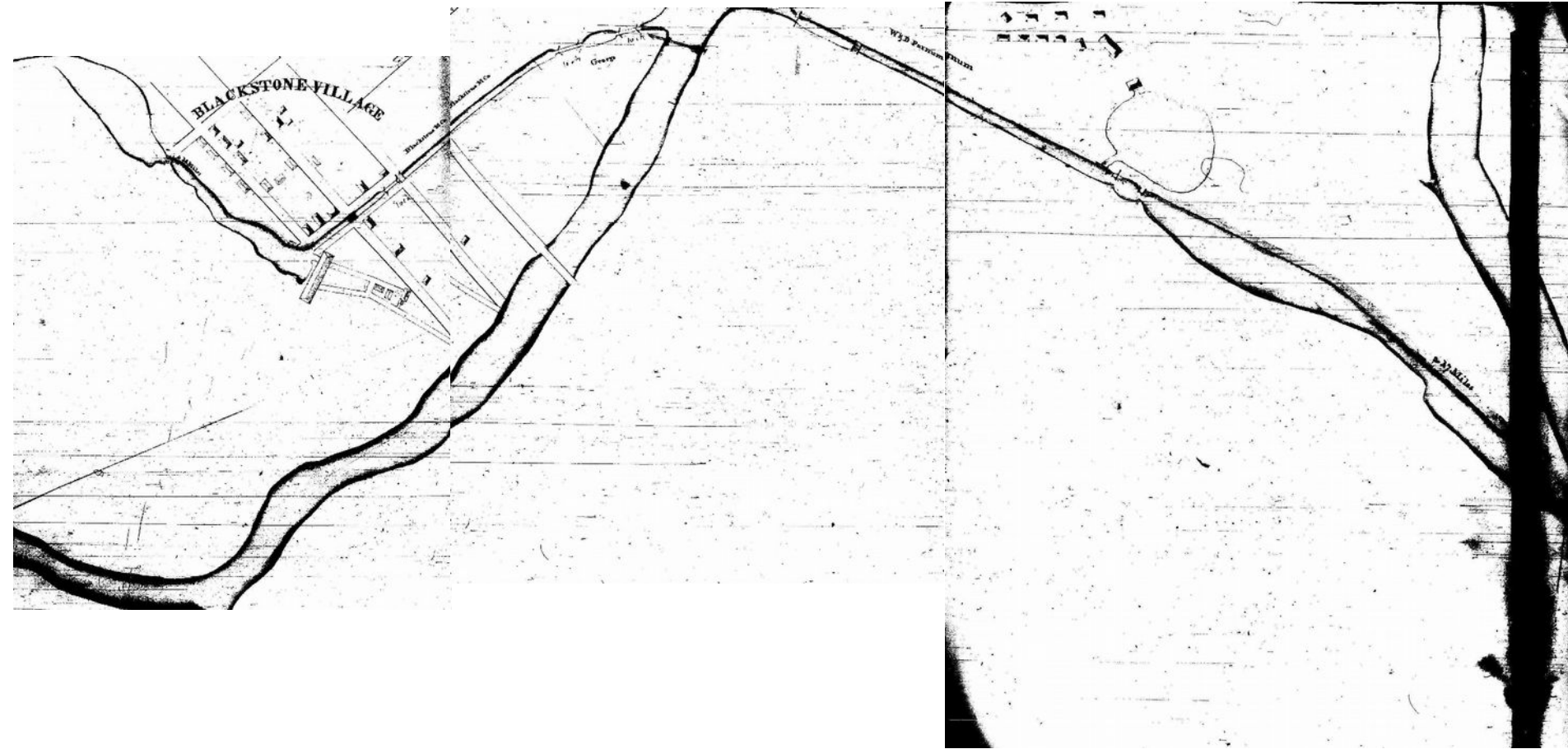
Canal at Ashton Dam



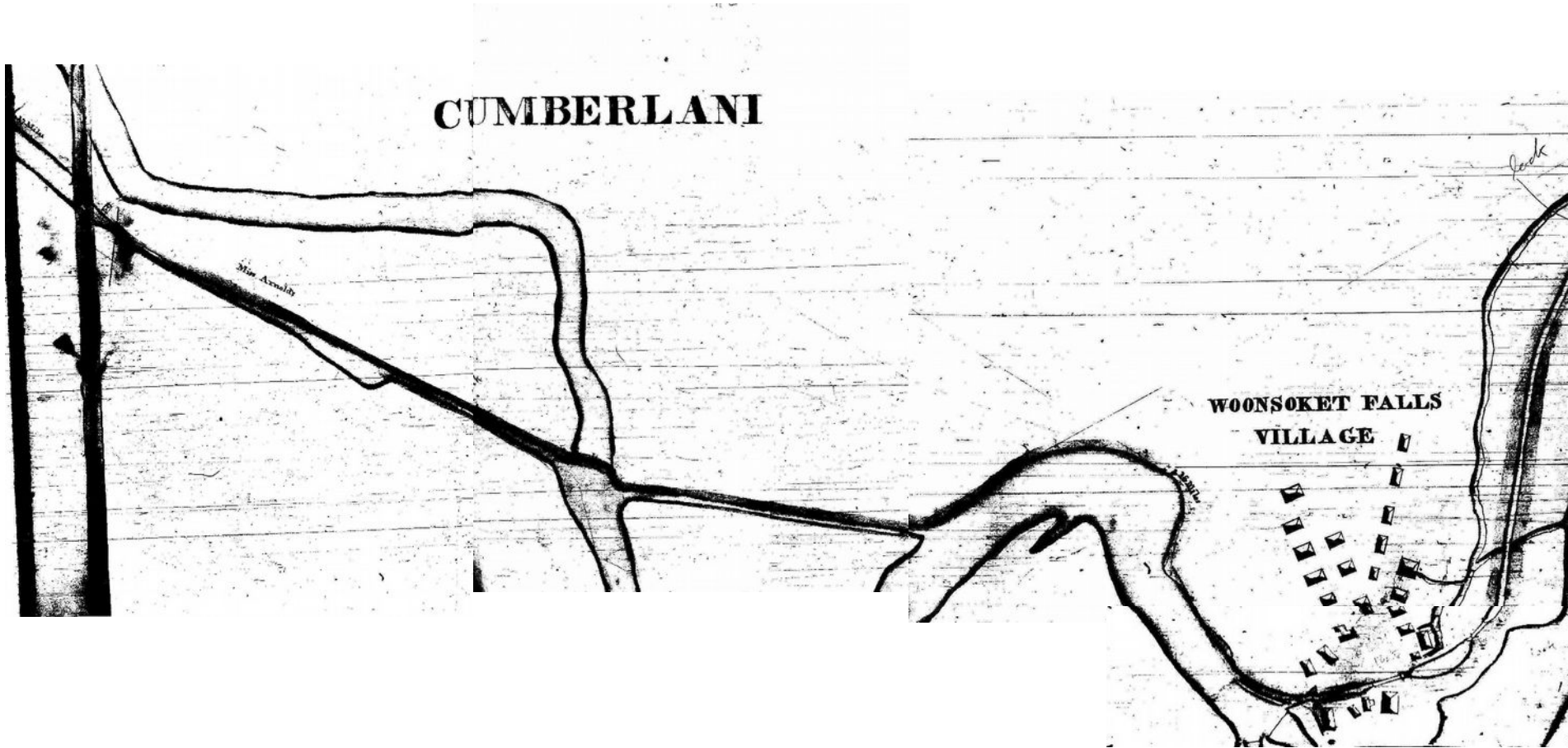
Canal through Blackstone



Phelps map Blackstone Village



Phelps map State Line



Canal looking south from St. Paul St., Blackstone



1851 St. Paul St. bridge looking north



1851 St. Paul St. bridge looking south



Canal looking north from St. Paul St., Blackstone



Canal piece at Blackstone, MA



Canal in Factory Pond



Factory Pond, Blackstone



Old canal dam at Rolling Dam



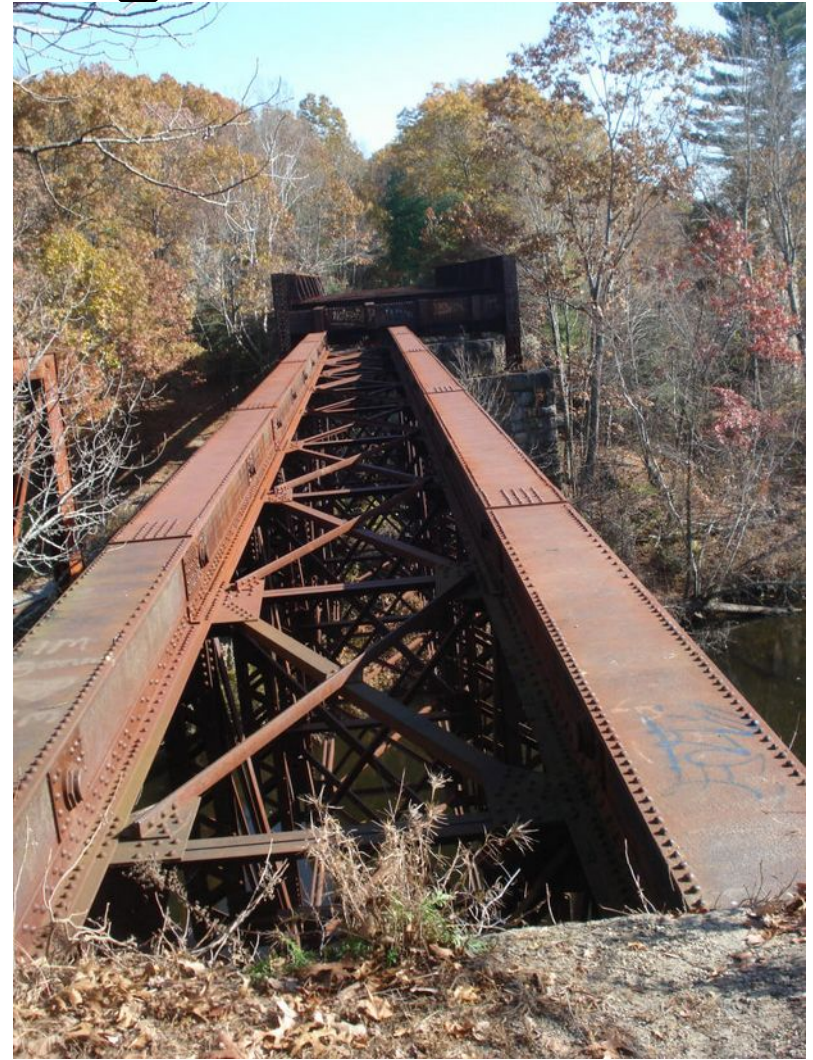
Old canal dam at Rolling Dam



Canal towpath below Triad Bridges



Triad Bridges



Triad Bridges



Millville Lock 21



Millville Lock 21



Millville Lock



Millville Lock 21



I & M Canal Lock 11 gate hardware



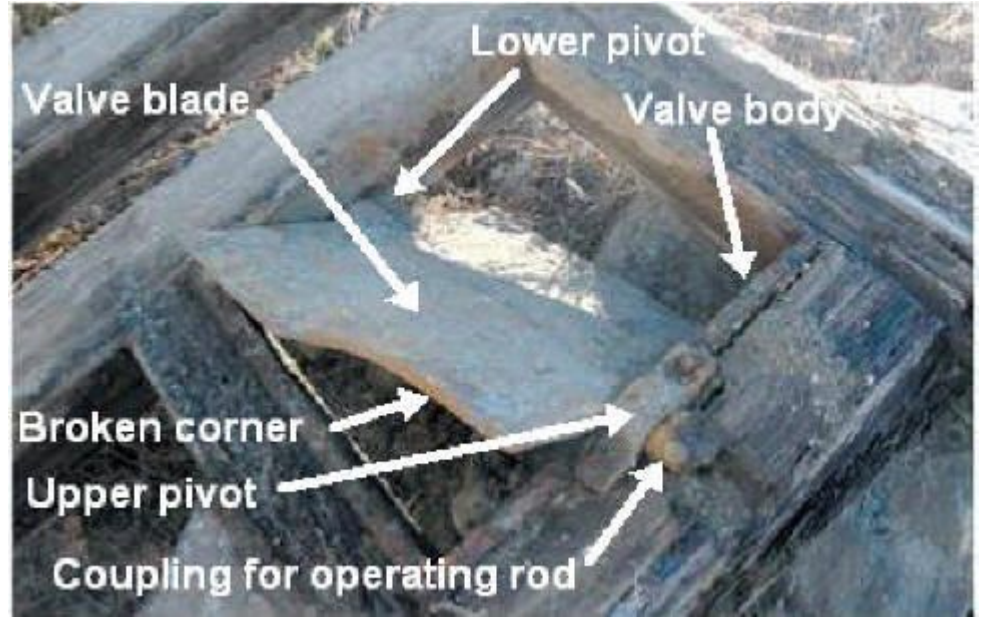
Millville Lock 21



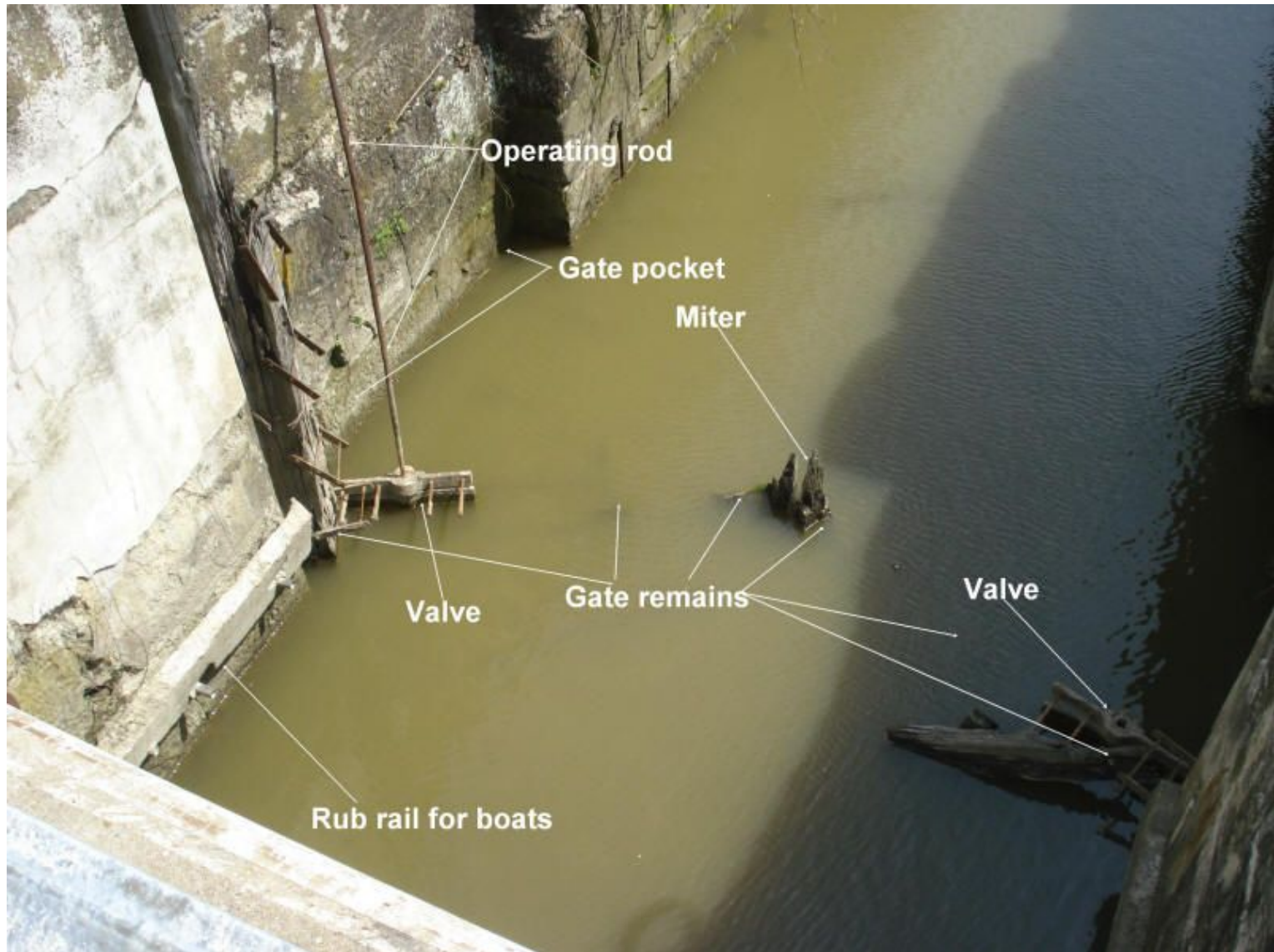
Morris Canal Lock 2 East



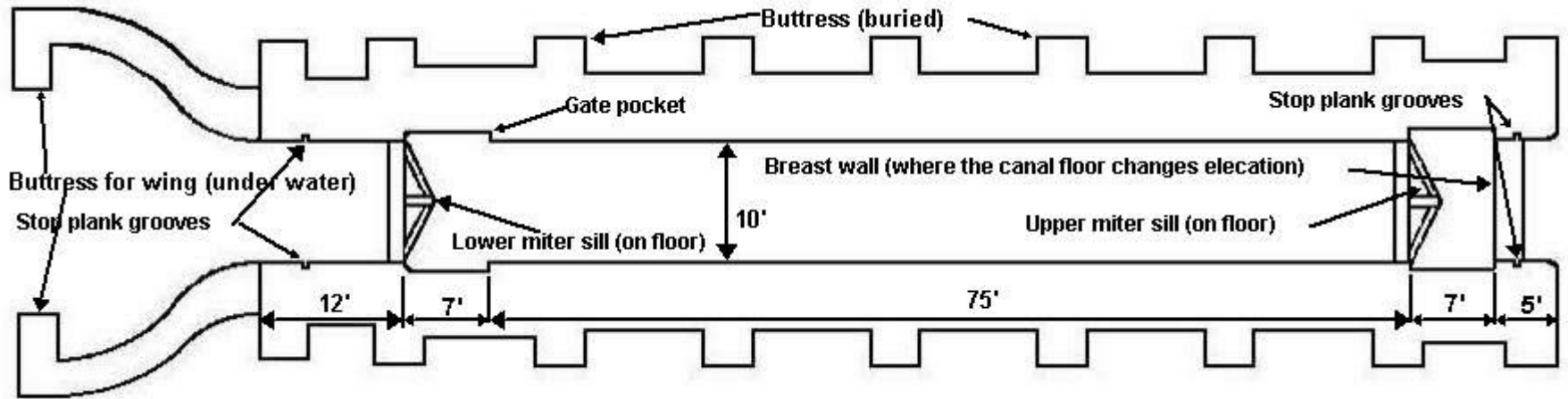
Morris Canal Lock 2 East



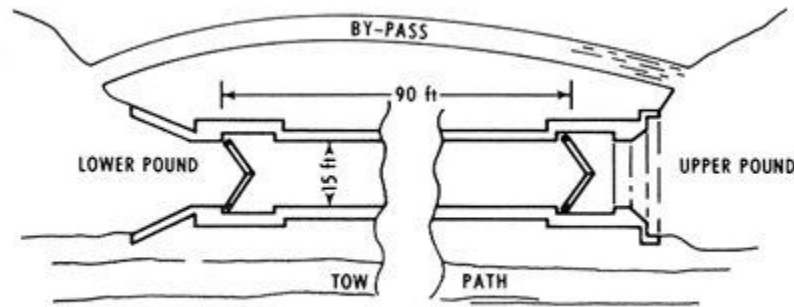
O & E Lock 37 North



Blackstone Canal Lock



Original Erie Canal Lock



LOCK OF ORIGINAL ERIE CANAL

Millville Lock 21



Skull Rock Lock 22



Skull Rock Lock 22



Change Bridge



Change Bridge



Change Bridge



Change Bridge

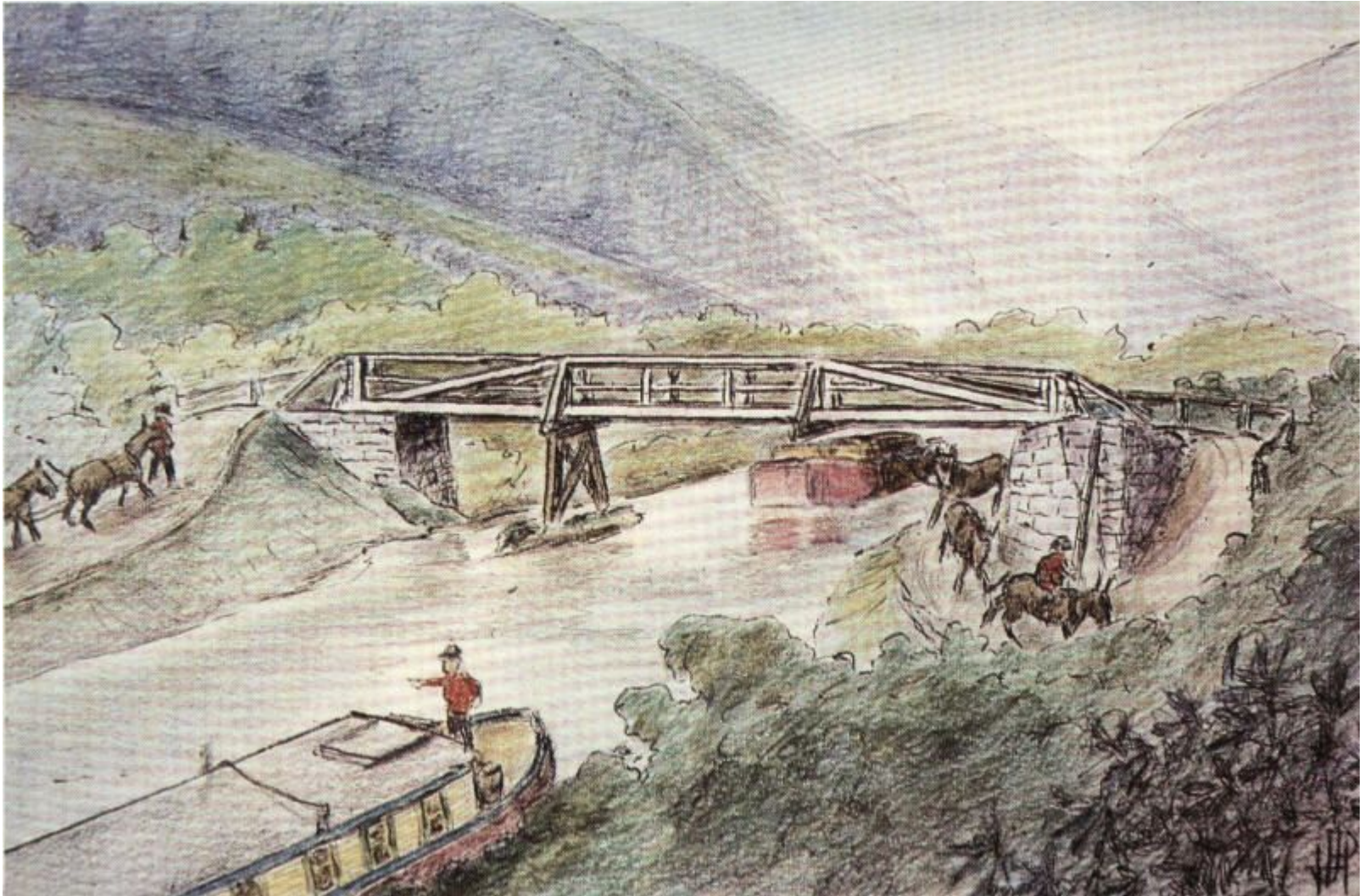


Change Bridge



Change Bridge

Sketch by Philip Hoffman



Change Bridge photo



Towpath towards Rte. 122



Canal approaching Lower Taft Lock 23



Lower Taft Lock 23



Lower Taft Lock 23



Prism below Mumford River



Rte. 16, Uxbridge



Navigation canal at Stanley Woolen Mill Parking Lot



Footbridge over power canal at Stanley Woolen Mill Parking Lot



Canal north of canal junction at Stanley Woolen Mill Parking Lot



Canal at Widow Willard Bridge site



Riverbend Farm Visitors Center



View north at bridge at Riverbend Farm



Hartford Avenue



Goat Hill Lock 25



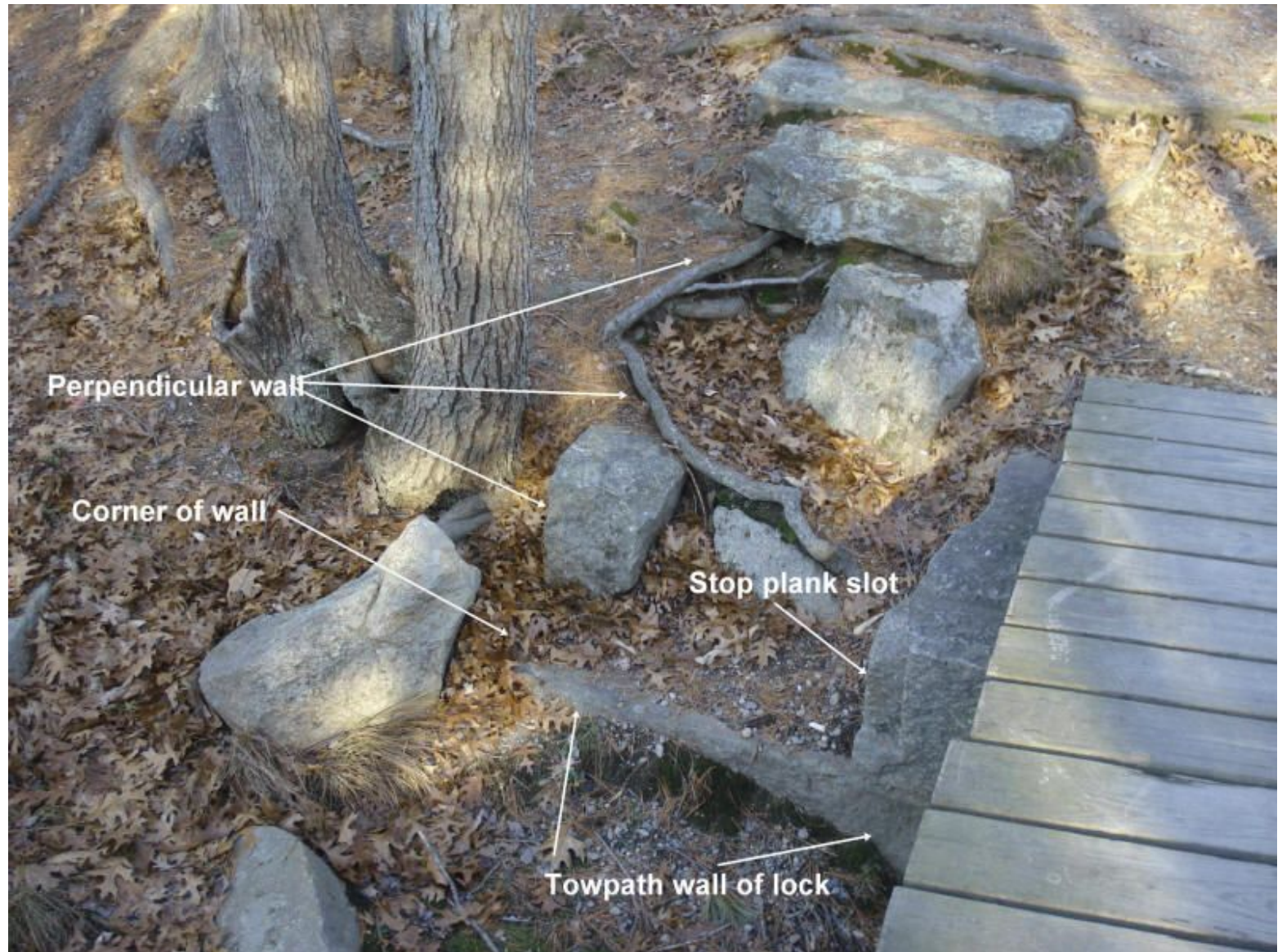
Goat Hill Lock 25



Goat Hill Lock 25



Goat Hill Lock 25



Goat Hill Lock 25



Goat Hill Lock 25



Goat Hill Lock 25



Goat Hill Lock 25



Towpath north of Goat Hill Lock



Towpath at bridges



Causeway



Clearance south of causeway



Work party, May 11, 2013



Canal north from causeway



Southern Canal breach



Northern bridge



Middle Breach



Old sewer line crossing



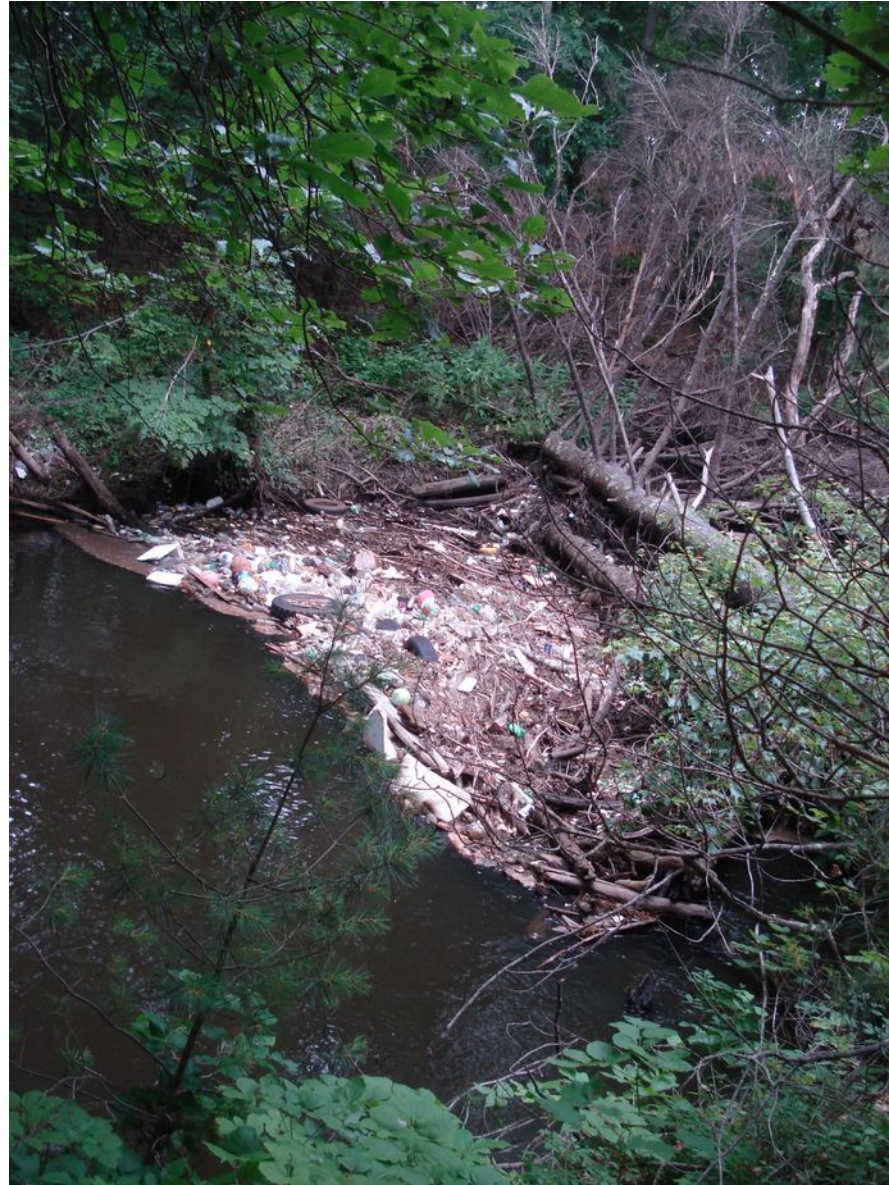
Canal blow downs



Canal Fall 2011 BRWA clean up



Trash after June 2013 heavy rains



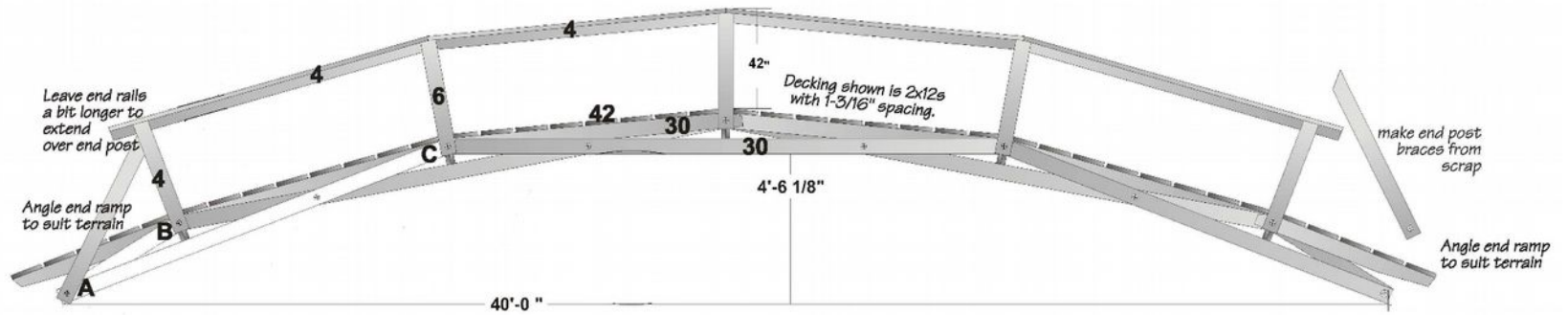
Northern breach



Northern breach



Possible bridges



North of northern breach



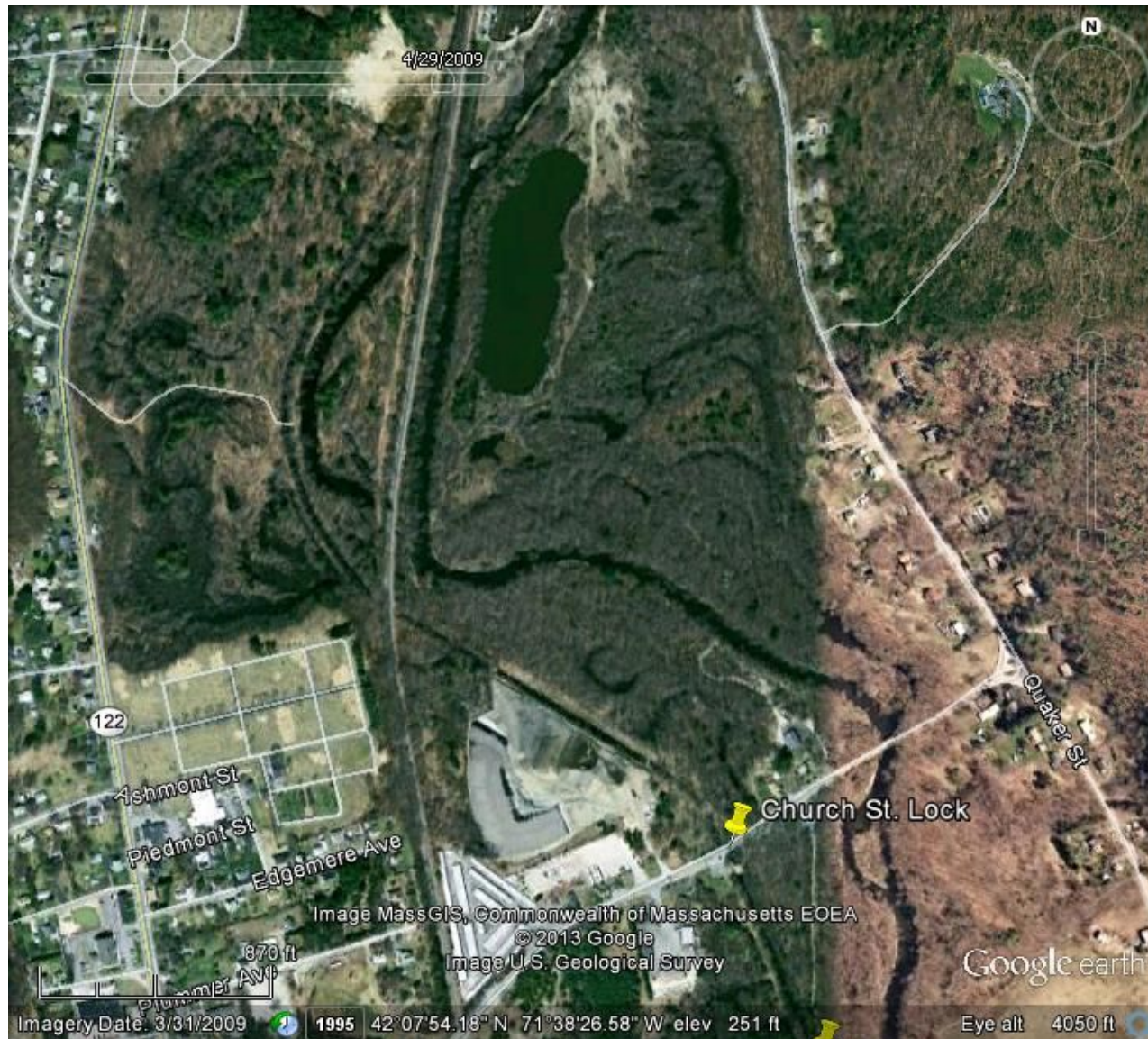
Church Street Lock 26



Plummers Landing



North of Church St.



Near Northbridge / Grafton Line



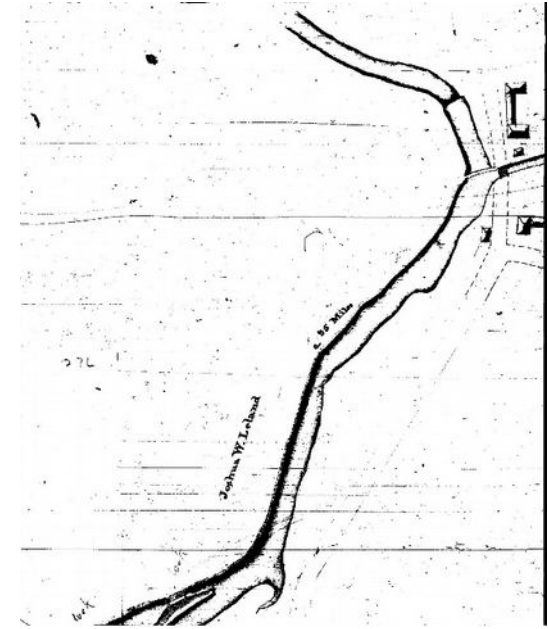
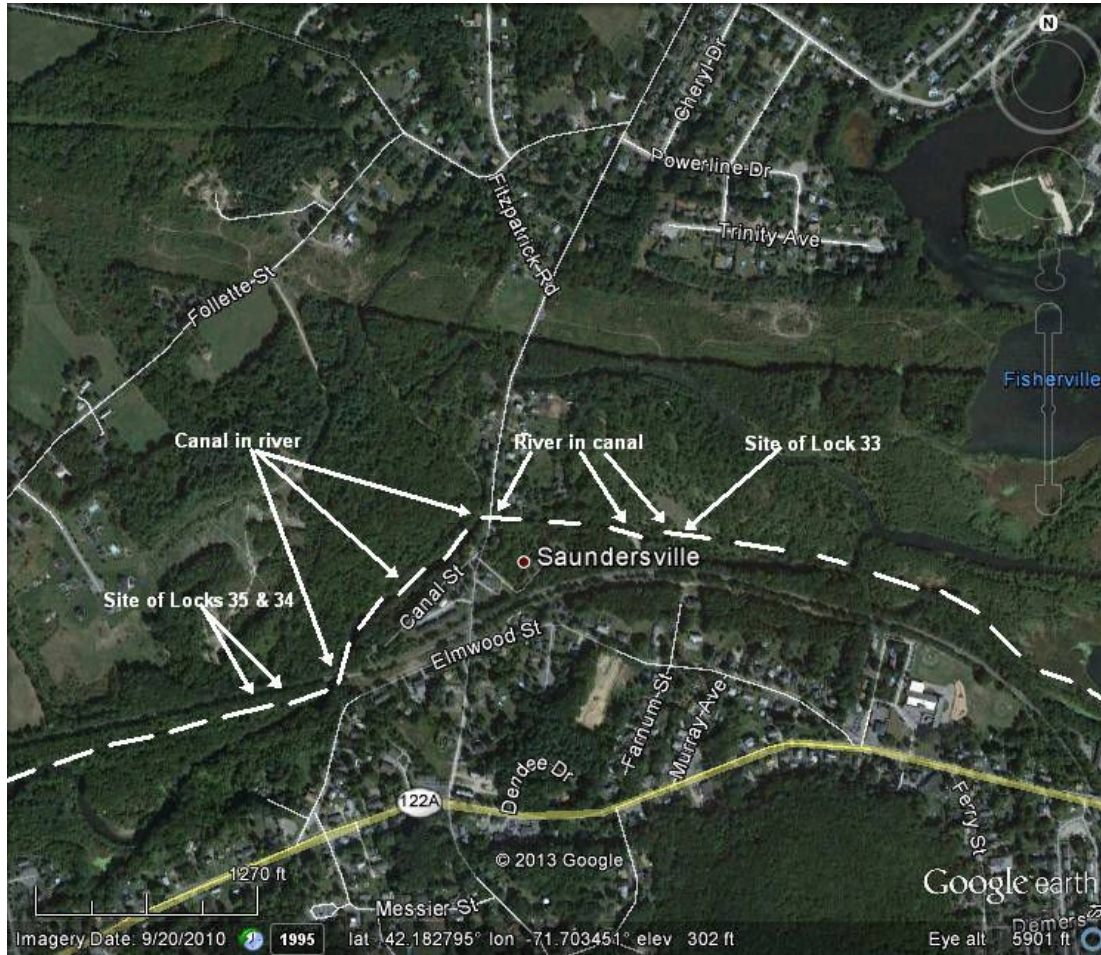
Depot St., Grafton



Fisherville



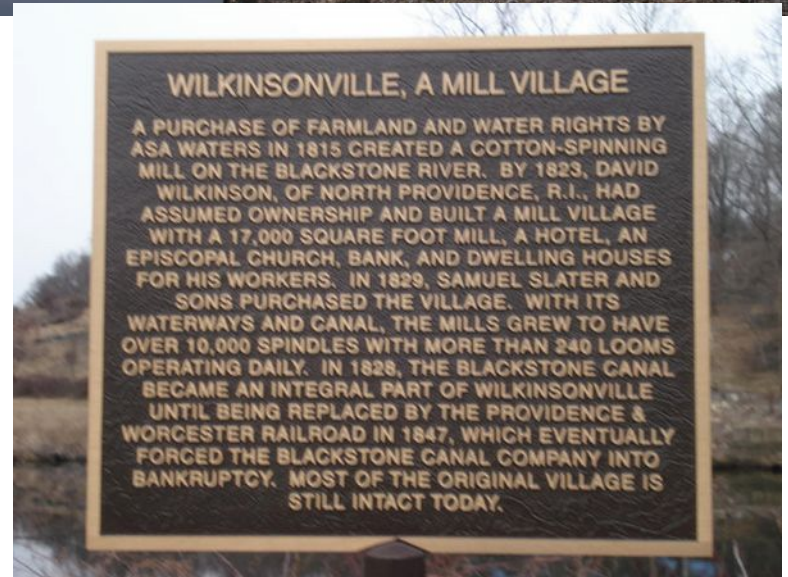
Pleasant Street Grafton area



West of Wilkinsonville



Singing Dam



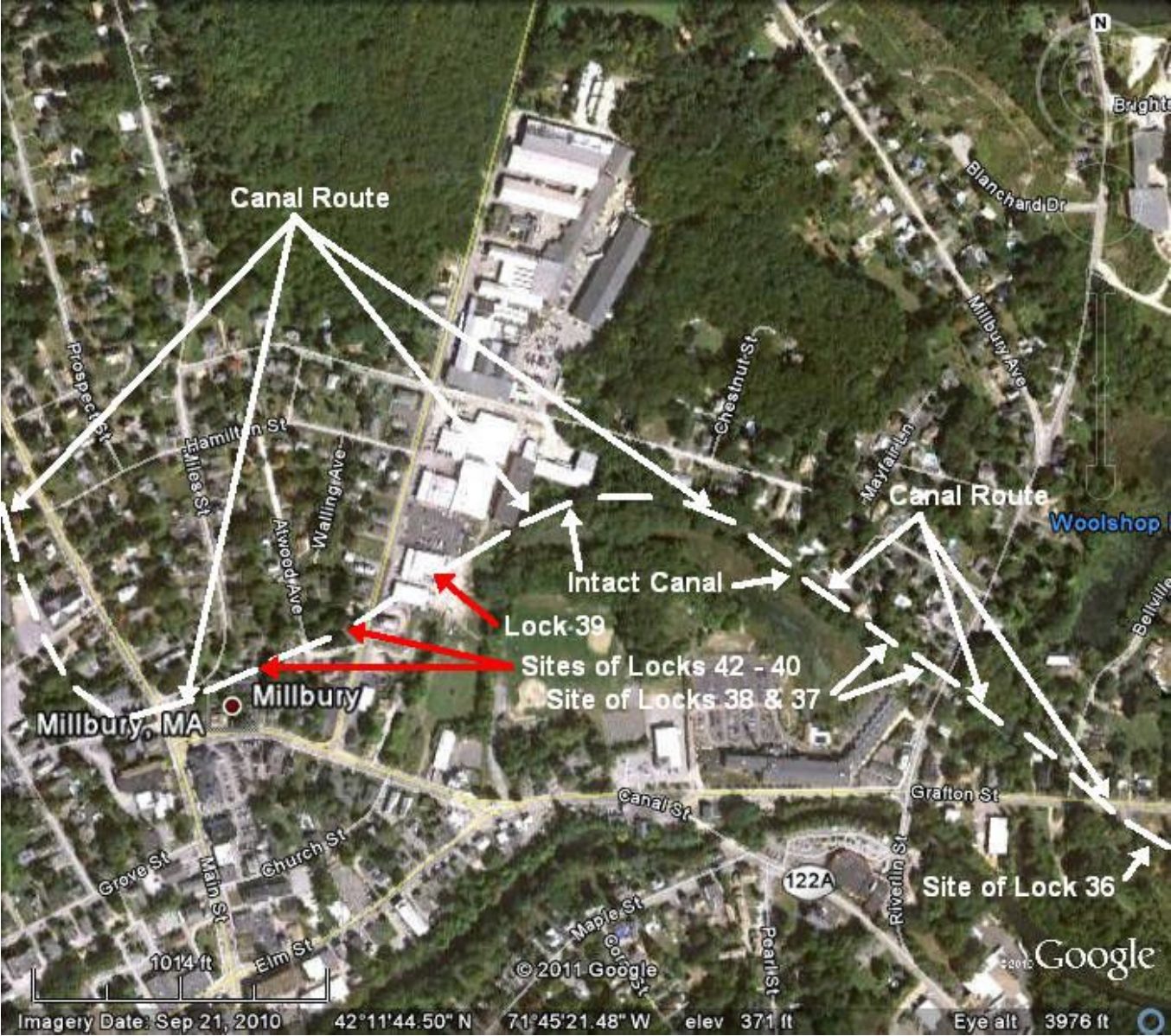
Millbury east



Millbury east



Millbury



Site of Locks 38 & 37



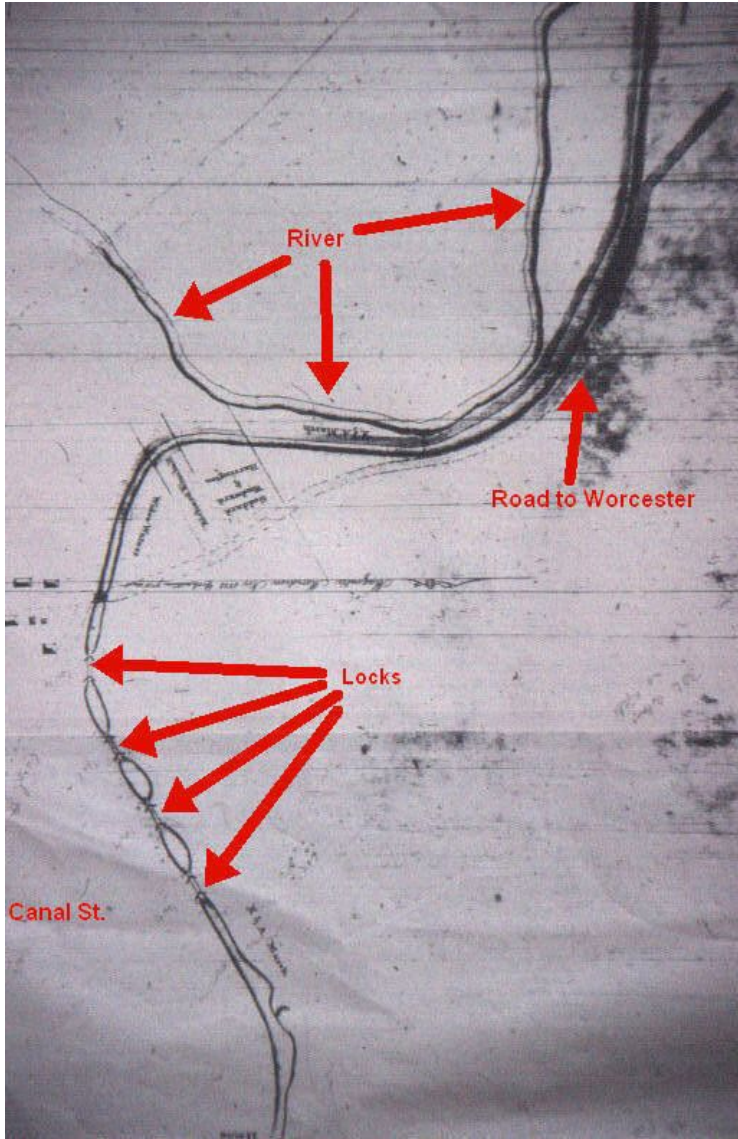
Millbury canal



Millbury Locks 40 -42



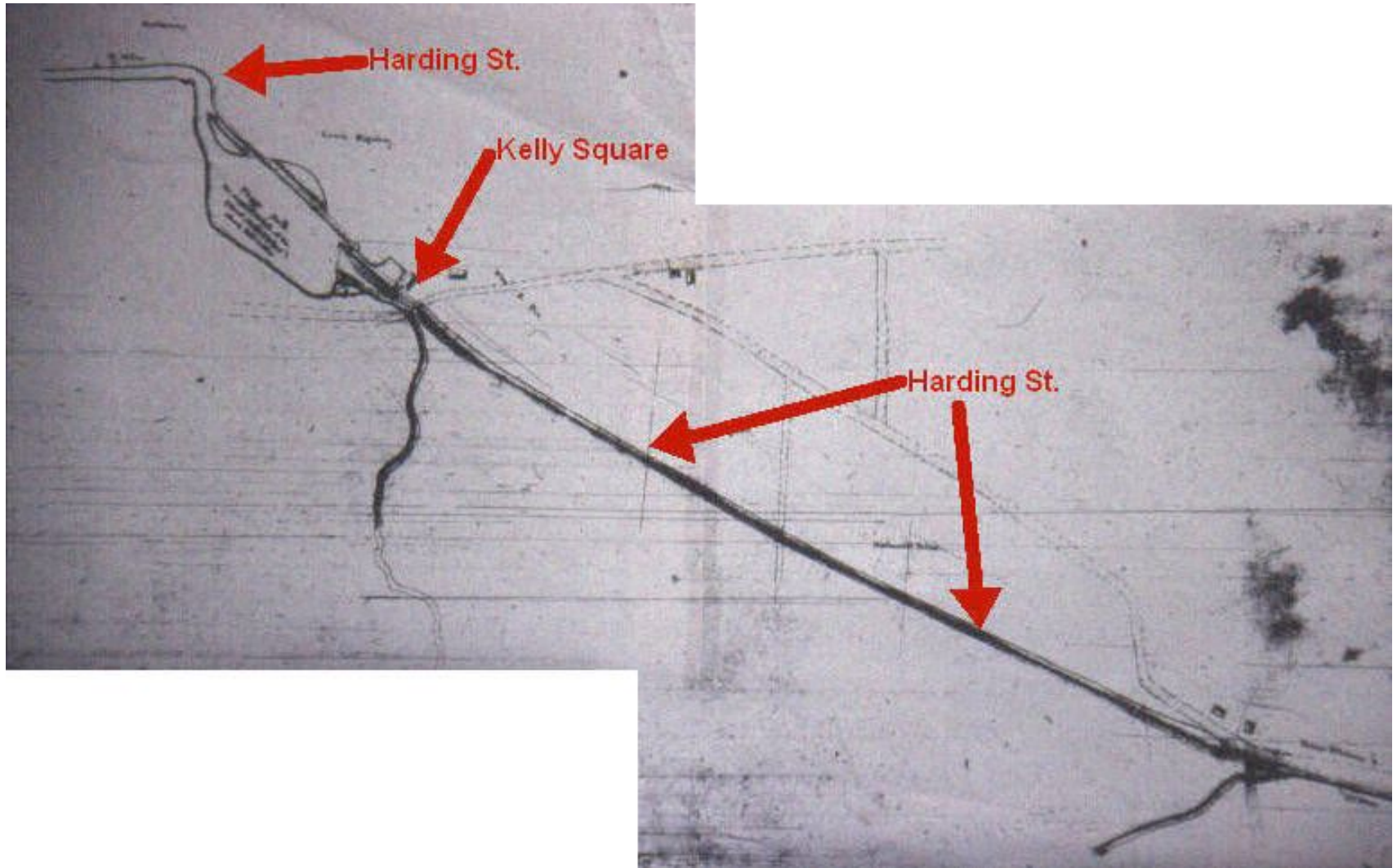
Millbury upper locks



South edge of Worcester



Harding St., Worcester



Harding St., Worcester



Union Station, Worcester



Thomas St., Worcester



THE
END