

# American Canal Society Canal Index

CANAL	STATUS			ACS		
				HAER		
STATE/PROVINCE	ENLARGEMENTS	DATES IN USE	CANAL	LENGTH SLACKWATER	TOTAL	LIFT LOCKS No./SIZE
COUNTIES:		1				
LOCATION (Endpoints of Canal):		2				
TOPOGRAPHIC MAPS:		3				
		4				
HISTORICAL SIGNIFICANCE:						
PHYSICAL DESCRIPTION:						
NAMES & ADDRESSES OF GROUPS CONCERNED WITH CANAL'S PRESERVATION/RESTORATION:						
BIBLIOGRAPHICAL SUMMARY:						
UNPUBLISHED RECORDS, PHOTOS, DRAWINGS (CEHR, HAER, HABS. Local or Regional Historical Societies, Libraries, etc.):						
EXISTING OR RECOMMENDED LANDMARK STATUS (CEHR, National Register, ETC.):						
Investigation made by:					Date:	
Address:						

Use additional pages for added information

# Parana - Tiete Navigation System

Sites below are in the upstream direction on each river

Site	Locks	Size	Lift	Year Built	GPS	Notes
<b>Parana River (Argentina - Paraguay)</b>						
Yacyreta Dam	1	270m x 27m	72'	1999	27deg28'51.18"S 56deg42'44.37"W	
Corpus Christi Dam						Proposed but not built - controversial
<b>Parana River (Paraguay - Brazil)</b>						
Itaipu Dam	None	N/A	N/A		25deg24'28.18"S 54deg35'18.55"W	Bypass canal with three locks proposed (per World Canals p407)
<b>Parana River (Brazil)</b>						
Ilha Grande						Proposed but not built - controversial
Engineer Sergio Motta (Porto Primavera)	1	689' x 56'	66'		22deg29'11.07"S 52deg27'18.81"W	
Jupia	1	689' x 56'	66'		20deg41'56.84"S 51deg37'57.15"W	
----- Mouth of Tiete River ----						
Ilha Solteria	None	N/A	N/A		20deg22'54.04"S 51deg22'04.20"W	Bypassed by Canal Pereira Barreto from Tiete River
Sao Simao	None	N/A	N/A		19deg01'10.88"S 50deg30'02.23"W	Head of navigation just below
<b>Tiete River</b>						
Tres Irmaos	2	466' x 39'	79'		20deg39'59.10"S 51deg18'42.54"W 20deg39'30.38"S 51deg18'20.97"W	
Canal Pereira Barreto				1991	20deg36'51.38"S 51deg04'37.21"W	Connects Tiete River above Tres Irmaos with pool on Parana River above Ilha Solteria
Nova Avanhandava	2	466' x 39'	59'		21deg06'59.41"S 50deg12'25.30"W 21deg06'42.76"S 50deg12'02.30"W	
Promissao	1	466' x 39'	82'	1986	21deg17'51.45"S 49deg47'02.67"W	
Ibitinga	1	466' x 39'	82'	1986	21deg45'19.76"S 48deg59'37.14"W	
Barri	1	466' x 39'	82'		22deg05'13.07"S 48deg45'19.49"W	
Barra Bonita	1	466' x 39'	82'		22deg31'13.40"S 48deg32'12.04"W	
Conchas	Head of navigation - 354 miles from the Parana					

### Rio de la Platte Tributary map

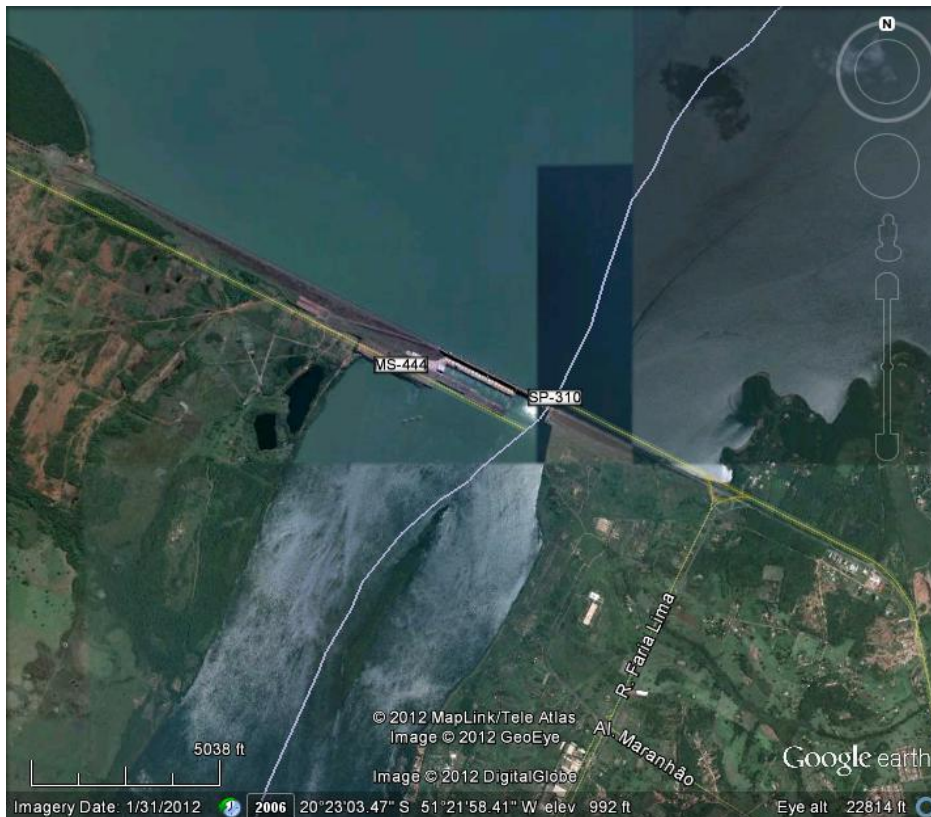


From Wikipedia

## Parana River photos



## Sao Simato Dam (no lock)



## Ilha Solteira Dam (no lock)





**Lock at Jupia, Brazil**

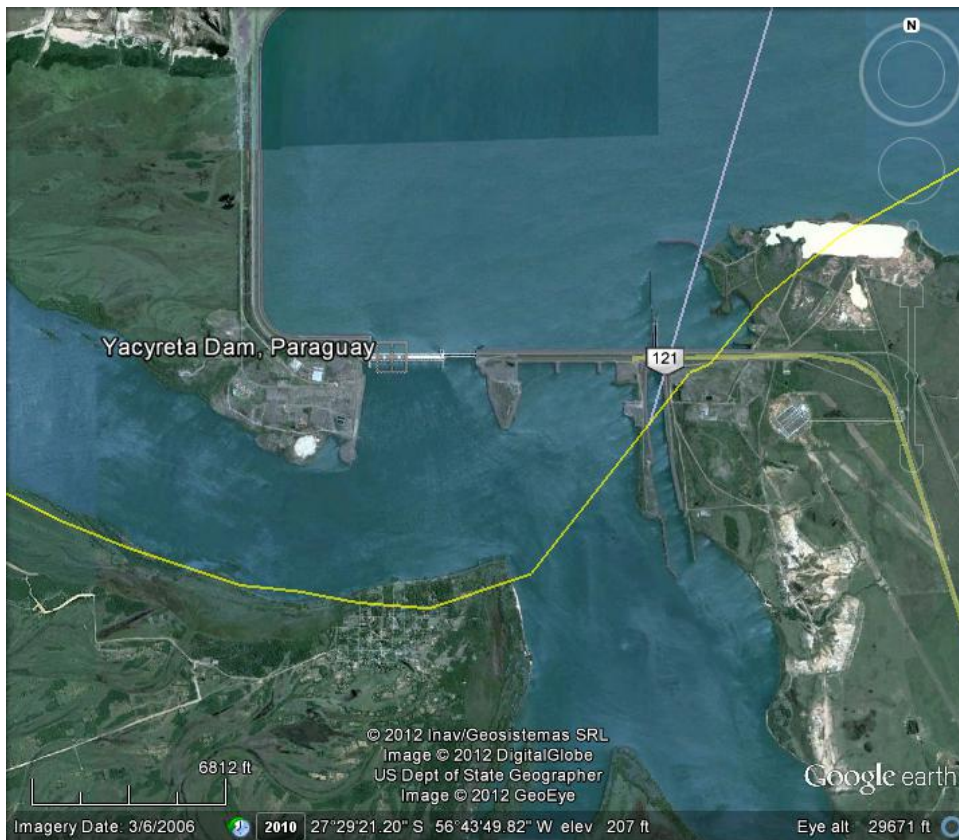


**Lock at Porto Primavera, Brazil**





**Itaipu Dam (Paraguay – Brazil)**



**Yacyreta Dam (Paraguay – Argentina)**

## Locks on the Tiete River

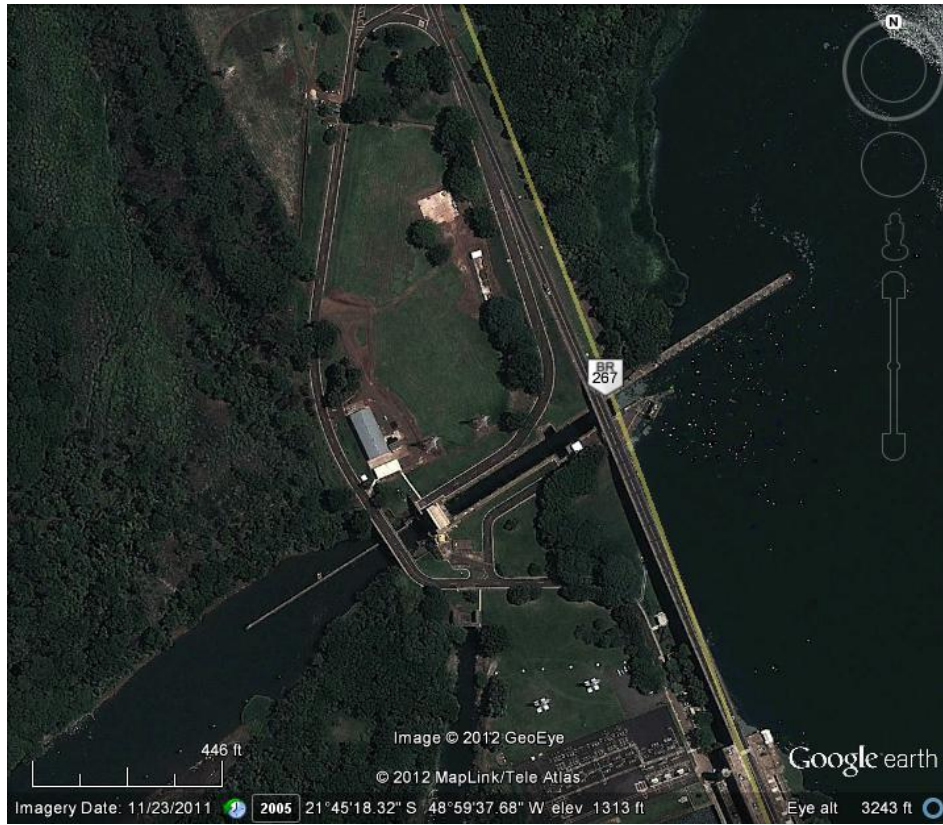


## Bara Bonita, Brazil

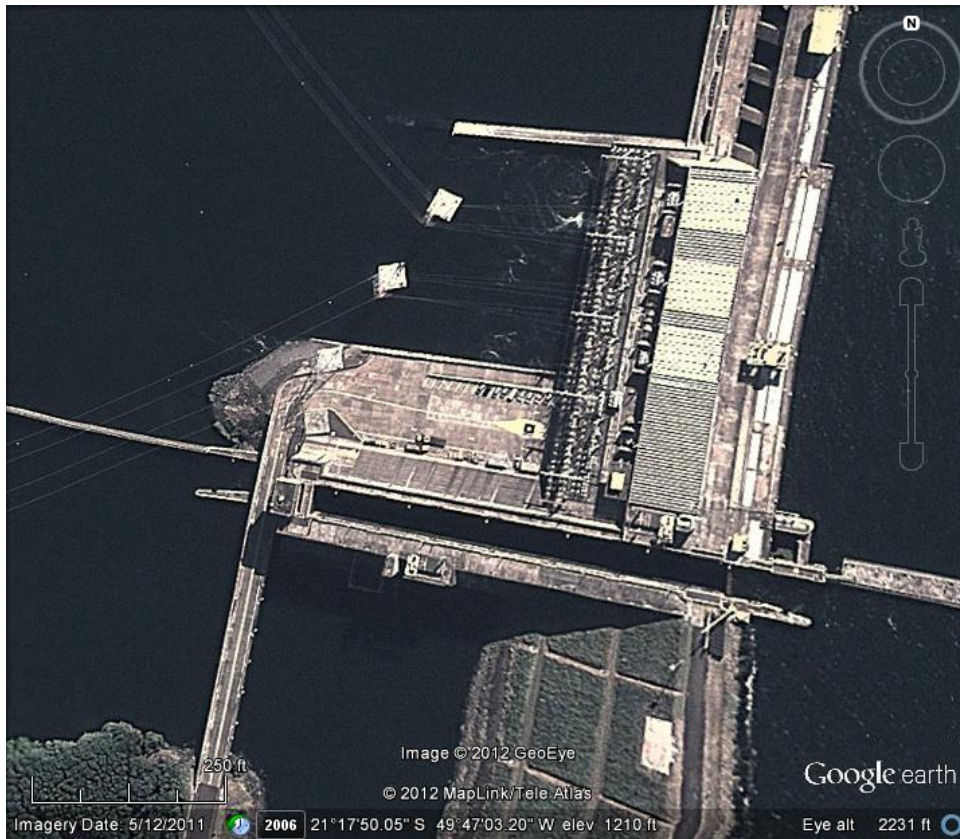


## Bariri, Brazil with tow in chamber





**Ibitinga, Brazil**

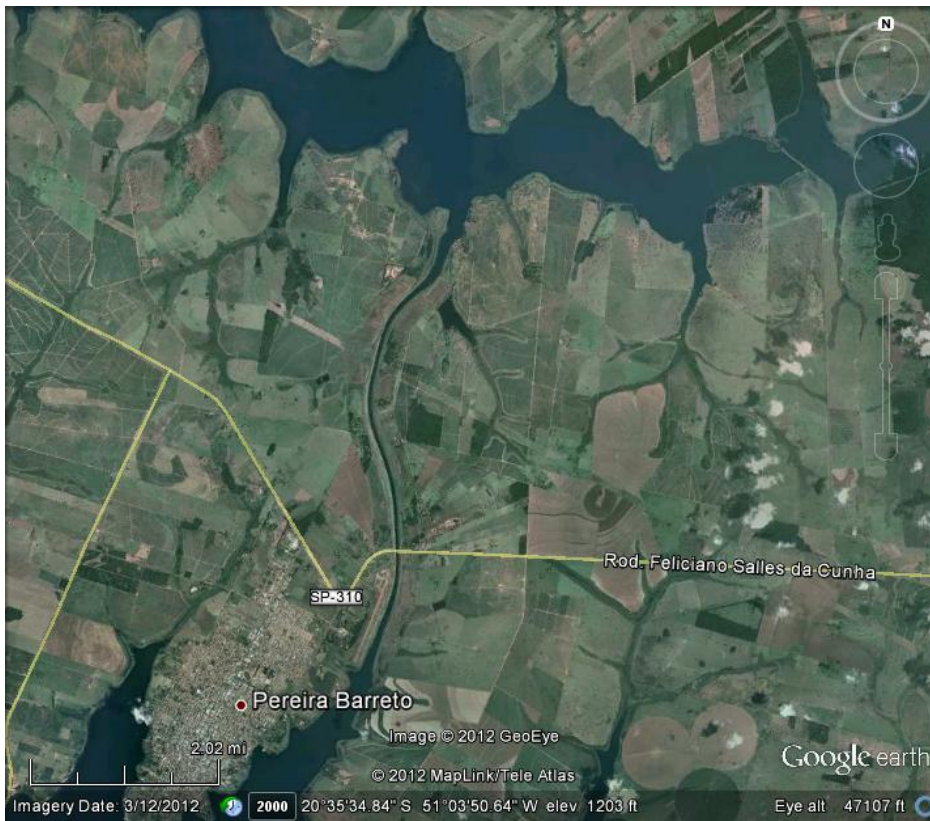


**Promissao, Brazil**

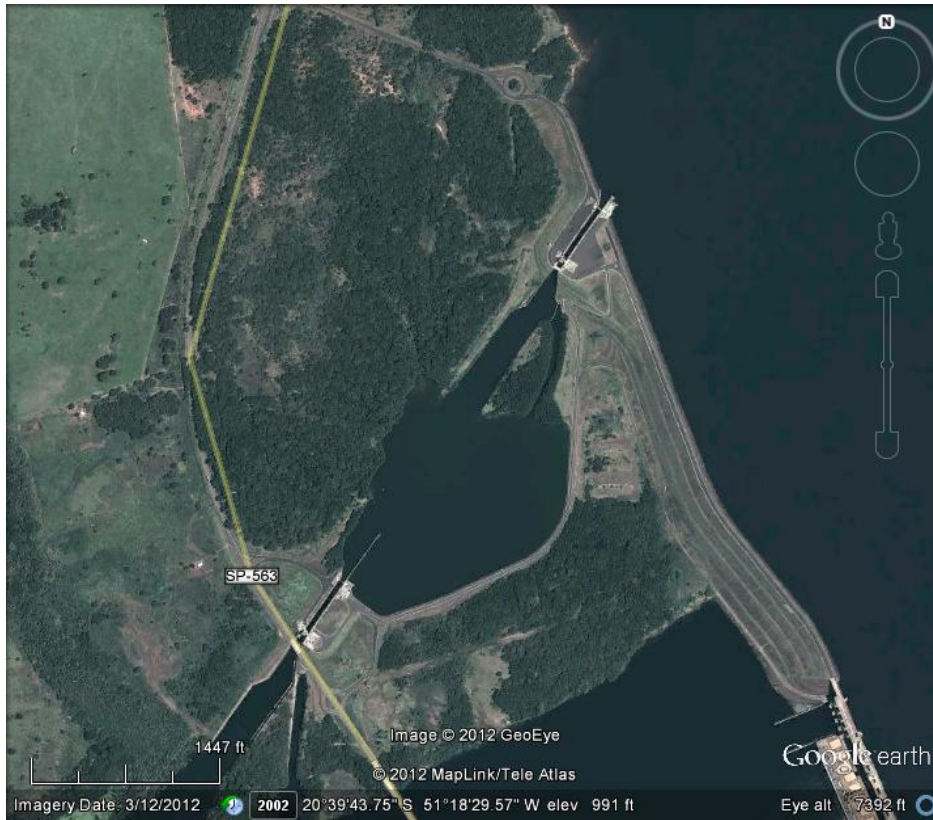




**Two Locks at Nova Avanhandava, Brazil**



**Canal Pereira Barreto**



**Two Locks at Tres Irmaos, Brazil**